

SEPHA

VISIONSCAN

max

VisionScan Max is an automated, tool-less, non-destructive inspection device for blister packs that is ideal for full batch inspection.

SEPHA VISIONSCAN max

VisionScan Max offers pharmaceutical blister pack manufacturers the ability to automatically leak test full production batches with minimal operator input at speeds of up to 8 packs per minute*.



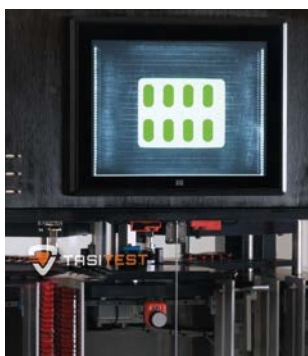
VisionScan Max is an objective, non-destructive alternative to the traditional blue dye leak test for blister packs with an automated feed magazine for minimal operator involvement. It enables pharmaceutical manufacturers and packagers to meet the stringent quality control requirements of the industry while reducing waste and costs. VisionScan Max generates accurate, reliable pass/fail results and its tool-less design improves efficiency where multiple product changeovers are required.

Features & Benefits

- Non-destructive, automated, tool-less seal and leak detection device for blister packs
- Incorporates imaging technology capable of detecting defects in individual blister pockets, channel leaks and weak seals down to 7µm*
- Stand-alone at line unit with magazine feed
- Automatic sorting of good and bad packs into segregated collection magazines
- High throughput of up to 8 packs per minute*
- Ability to perform 100% batch testing
- Easy to use touch screen interface. Access any menu with just '2 clicks'
- Tool-less set-up. Ideal solution for production lines running products in multiple materials/design formats.
- Operating system can store up to 30,000 product types
- Can be part of a 21 CFR Part 11 compliant system
- Active Directory included and OPC Connectivity is available on request

* Pack and material dependent

** Recipe dependent



Machine Operation

Test methods are developed for each pack format and are stored as 'recipes' for that pack type. The operator loads a magazine of blisters into the unit, the unit automatically runs the tests, and sorts packs into relevant pass or fail magazines. VisionScan Max can be part of a 21 CFR compliant system and also features a new user friendly HMI interface.

1. Load Packs and Select Product:

Set magazine to correct pack dimensions and load packs into magazine, and select relevant product test method from the product recipe library. Assign batch details.

2. Start Test and Identify Packs:

Press Start. The system selects the first pack from the magazine, indexes the pack into the test cell and then loads the second pack. Packs one and two are presented to the test cells for analysis.

3. Reference Image and Vacuum Phase Image:

After the packs are indexed into the test cell a reference image is taken of the packs. A small amount of 'positive pressure' is applied to the packs** to make all pockets uniform. An appropriate vacuum is then applied in the test chamber and an image of the pockets is captured under vacuum. The difference between the reference image and the vacuum phase image is calculated and will define 'gross' failures. The vacuum is then reduced and further images are taken to detect 'decay' failures. The packs are then automatically PASSED or FAILED and segregated into relevant PASS/FAIL magazines.

4. Pass or Fail Results:

PASS or FAIL results are presented on screen. A summary of the last 10 cycles (20 tests), batch details and individual test results per cell are all shown on screen simultaneously. VisionScan Max is capable of detecting defects down to 7µm*.

Technical Specification

PACK TYPE:	Non-porous blister pack	
PACK SIZE:	Min: 65mm (W) x 30mm (L) x 3mm (H)	
	Max: 140mm (W) x 105mm (L)	
BLISTER LAYOUT:	All	
POCKET SIZE:	Min pocket area: 40mm ² Max pocket area: 600mm ²	
OPERATION:	Automatic	
CONSTRUCTION:	Stainless Steel (Grade 304) and Anodised Aluminium	
USER INTERFACE:	15" XGA LCD display, 1024 x 768 pixels with resistive touch screen	
UTILITIES:	Electrical:	110/230V AV Single Phase
	Air Supply:	6 Bar
CONFIGURATION:	3 x USB Ports	1 x Ethernet Port
TEST CYCLE:	From 8 packs per minute**	
MAGAZINE CAPACITY:	500mm capacity	
TOOLING CHANGEOVER:	None required	
AUDIT COMPLIANCE:	Can be run in compliance with 21 CFR Part 11	
MACHINE DIMENSIONS:	920 (W) x 830 (D) x 1725(H) mm (36.2 x 32.7 x 67.9")	
MACHINE WEIGHT:	290 kg (640lbs)/ Shipping weight 390kg (860lbs)	
WARRANTY:	Supplied with a 12 month warranty. (Service Level Agreements and/or extended warranties are available for additional support).	



TASITEST

**PACKAGING TEST
& INSPECTION**

**Unit 25 Carrowreagh Business Park
Carrowreagh Road, Dundonald
Belfast, BT16 1QQ
United Kingdom**

 +44 2890 48 48 48

 www.tasitest.com

 www.sepha.com

2440 W Corporate Preserve Drive,
Suite 600, Oak Creek,
WI 53154 USA

 +1 4146 713 332


Dongfang Rd 3601,
Harvest Industrial Park
No.7 Building, Room 403,
Pudong, Shanghai, 200125
China

 +86 2158 366 290

Liebigstrasse 5
D-85757 Karlsfeld
Germany

 +49 8131 593 910

Via Rondona, 33
44049 - Vigarano Pieve (FE)
Italy

 +39 0532 715 631

